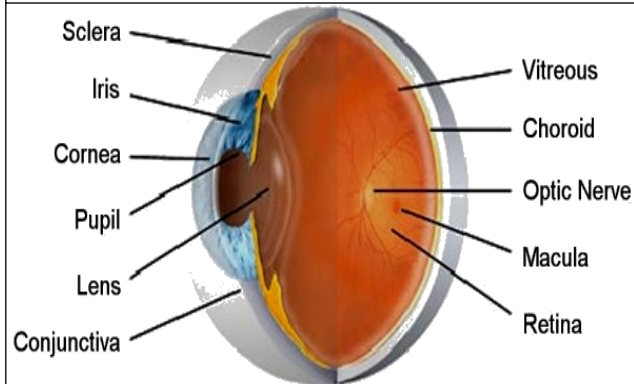


Retinal Vein Occlusion



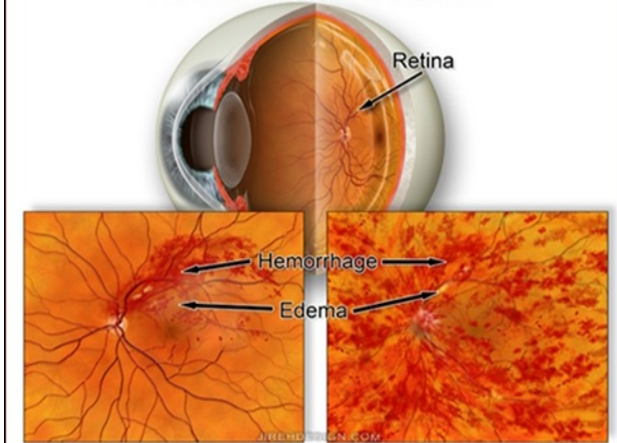
What is it?

- Retinal vein occlusion (RVO) is a vascular disorder of the retina and is one of the common causes of blindness.
- With blockage of a vein, there is back pressure in the capillaries leading to

What are the symptoms?

- BRVO symptoms range from hardly noticeable to extensive loss of vision.
- CRVO symptoms usually include massive loss of vision.

Retinal Vein Occlusion



Branch Retinal Vein Occlusion Central Retinal Vein Occlusion

A branch retinal vein occlusion (BRVO) happens when one of the smaller retinal veins is blocked.

A central retinal vein occlusion (CRVO) happens when the large retinal vein, responsible for transporting blood out of the eye, becomes blocked.

aditya Jyot

Eye Hospital Pvt. Ltd.
ISO 9001 : 2008



ADITYA JYOT EYE HOSPITAL PVT.LTD.

Plot No.153,Road No.9, Major Parmeshwaran
Road, Wadala, Mumbai-400031 (India)

Tel.: 91-22-24177600/ 6510290

Fax: 91-22-24177654

E-mail: appointments@adityajyoteyehospital.org

Website: www.adityajyoteyehospital.org